

NVF-800S Firmware Upgrade Procedure

Model: NVF-800S(8VDSL+2Giga Ethernet Managed 4-Band VDSL IP DSLAM)

1. Connection diagram:



2. Upgrade Environment:

1. Ethernet Port: RJ-45 cable x 1
2. Upgrade program: TFTP Server x 1
3. Notebook or PC x 1

3. Procedure:

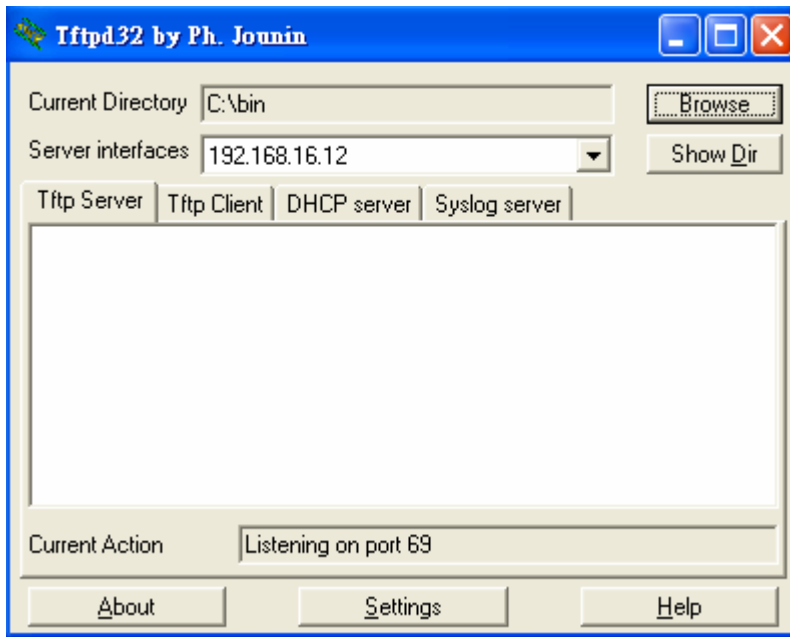
1. Click TFTP Upgrade Firmware on the Web management site

The screenshot shows the web management interface for the NVF-800S. On the left is a navigation menu with sections "Basic" and "Administrator". The "Basic" section includes "Home", "Port Status", and "Port Statistics". The "Administrator" section includes "IP Address", "Switch Settings", "Port Controls", "Link Aggregation", "Filter Database", "Vlan Config.", "Spanning Tree", "Port Scheduler", "Smp", "Interface", "SNR Status", "Security Manager", "TFTP Update Firmware", "Configuration Backup", "Reset System", and "Reboot". The main content area displays "TFTP Download New Image" with a form containing the following fields:

TFTP Server IP Address	192.168.16.12
Firmware File Name	800_C9n.bin

Below the form are "Apply" and "Help" buttons. An image of the NVF-800S device is shown at the top right of the interface.

2. Run TFTP Server program



3. Place the firmware file into TFTP server current directory

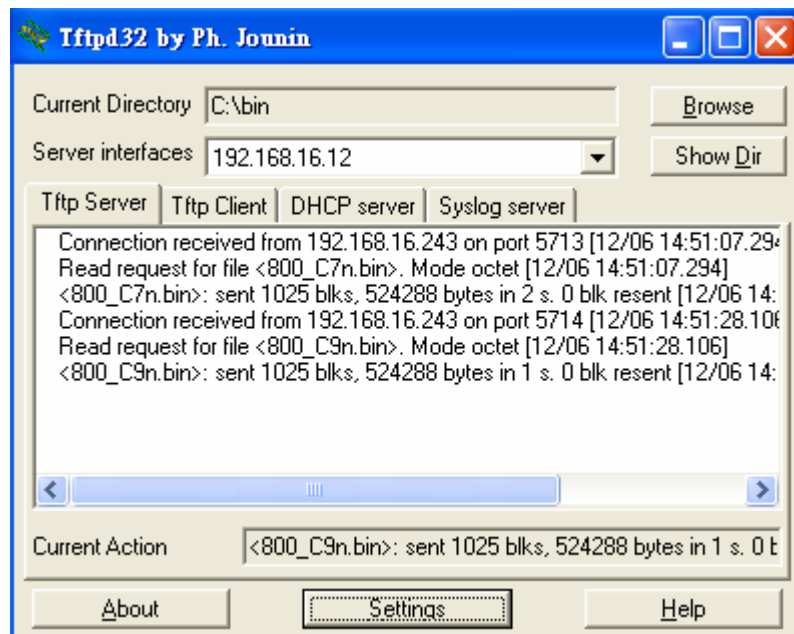
4. Input TFTP Server IP Address and Firmware File Name on TFTP Upgrade Firmware page and then click the Apply button



5. Click the Update Firmware button to update firmware



6. Confirm the update through TFTP server



7. Reboot the system



The image shows a screenshot of a network switch's web management interface. On the left is a blue sidebar menu with the following items:

- VDSL**
39 °C
0026 RPH
- Basic**
 - Home
 - Port Status
 - Port Statistics
- Administrator**
 - IP Address
 - Switch Settings
 - Port Controls
 - Link Aggregation
 - Filter Database
 - Vlan Config
 - Spanning Tree
 - Port Sniffer
 - Sntp
 - Interface
 - SNR Status
 - Security Manager
 - TFTP Update Firmware
 - Configuration Backup
 - Reboot System
 - Reboot

The main content area displays the title "Reboot Switch System" in blue. Below the title are two buttons: "reboot" and "Help". Above the interface, a photograph of the physical switch is shown, featuring a label that reads "Management Board VDSL P-DIGLAN".